

Insert DVD , browse to folder SAFI 8.0 and open it

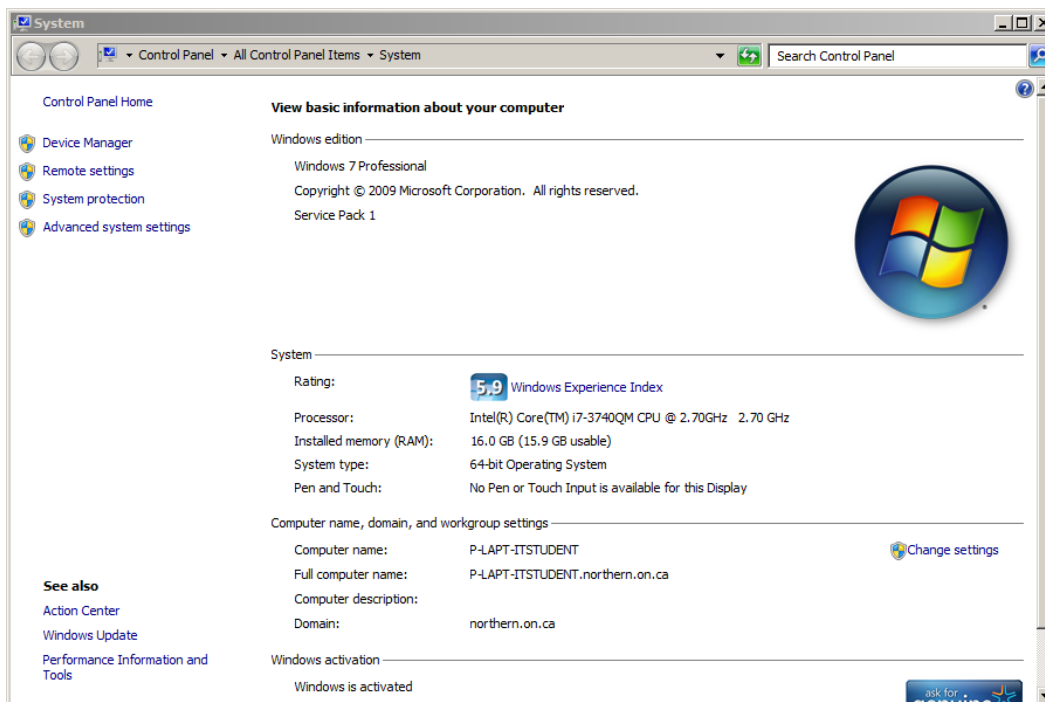
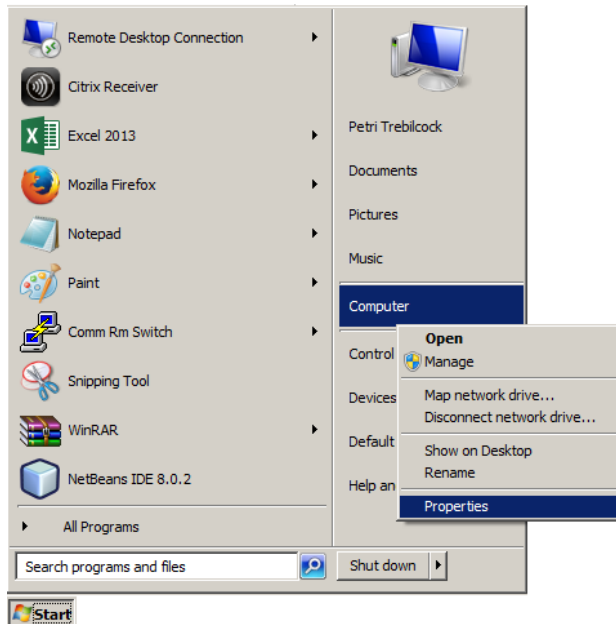
SAFI comes in 2 versions for 2 different computer architectures: 32-bit and 64-bit. Before installing, you need to know which one you have.

(If you know your computer's architecture, you can skip this part)

### **HOW TO FIND OUT WHICH COMPUTER ARCHITECTURE YOU HAVE**

In Windows 7:

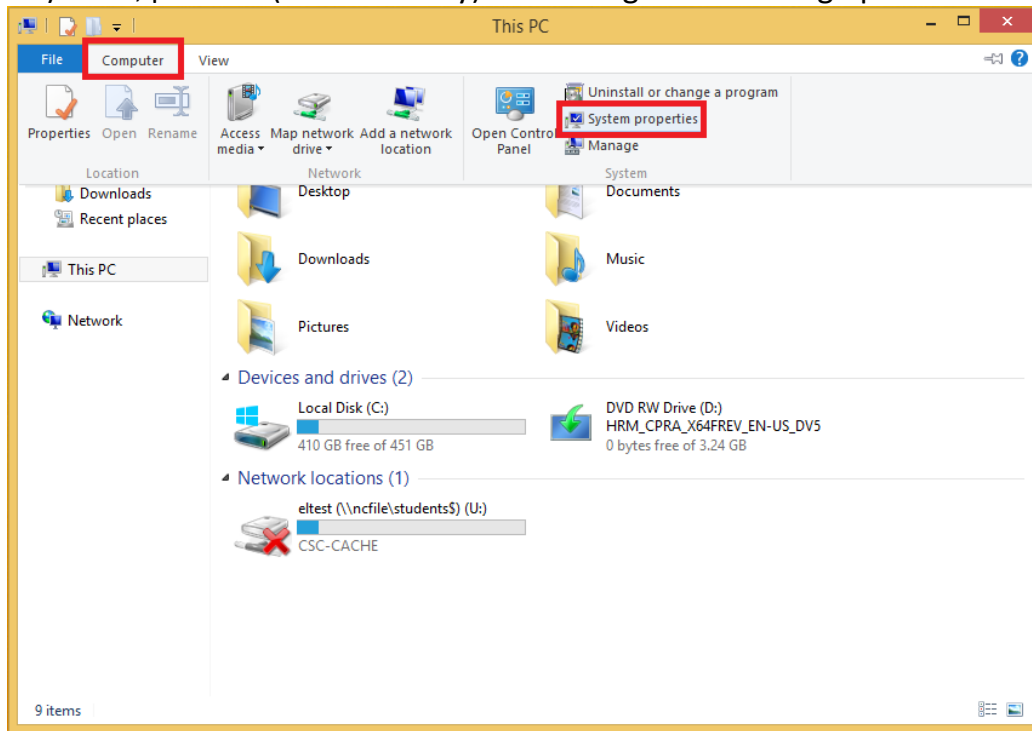
Click Start > Right Click "Computer" and click "Properties"



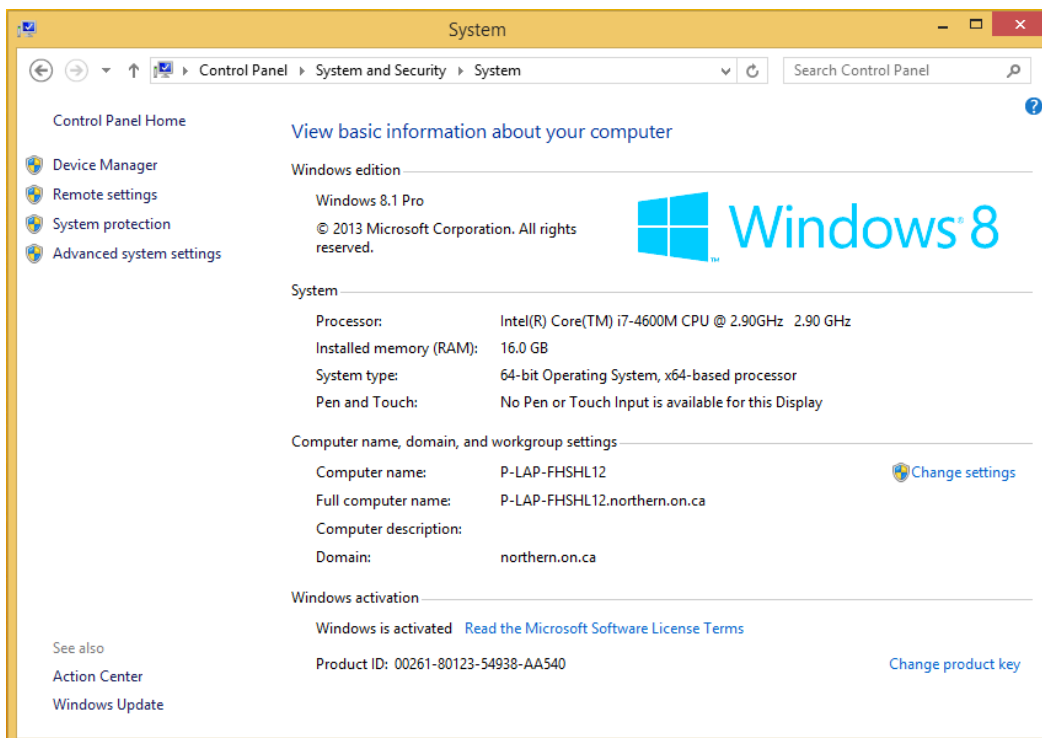
Your PC's architecture is located under "System type," in this case it is a 64-bit computer.

### In Windows 8/8.1:

On your keyboard, press  (Windows Key) and 'E' together to bring up "This PC"



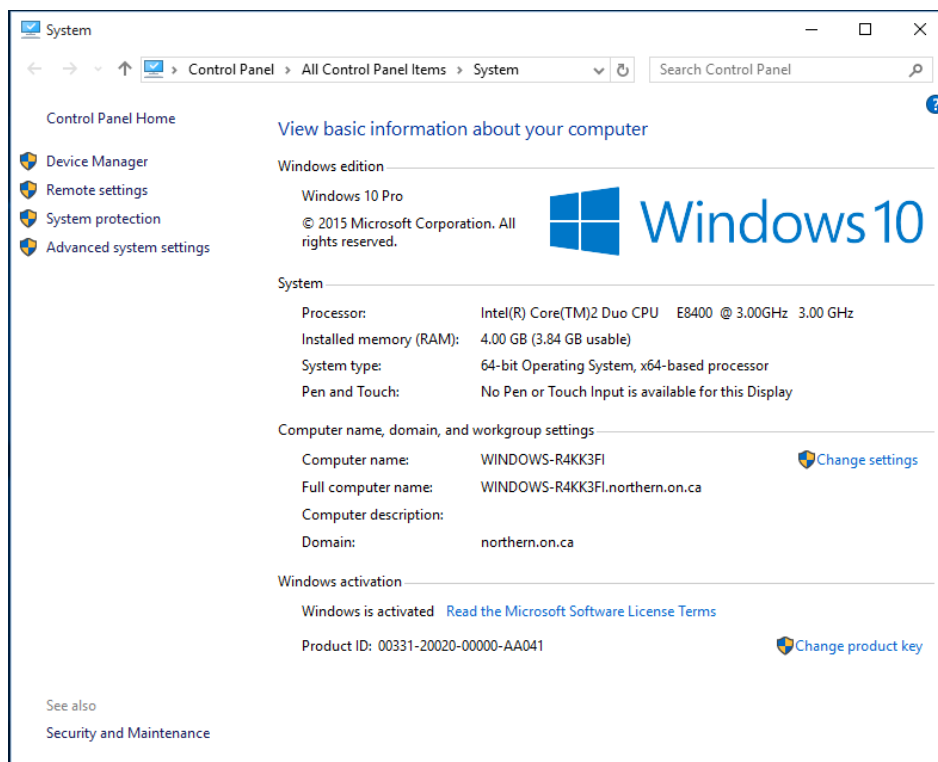
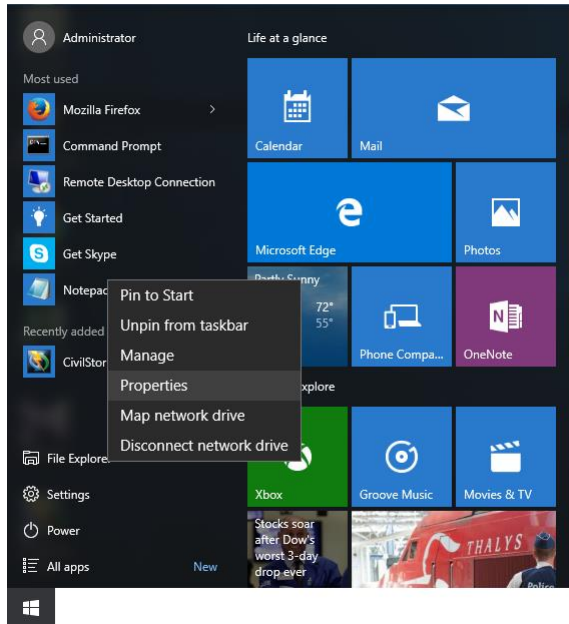
Click "Computer" then "System properties"



Your PC's architecture is located under "System type," in this case it is a 64-bit computer.

### In Windows 10:

Click the Start Button > Right Click "File Explorer" > Click "Properties"



Your PC's architecture is located under "System type," in this case it is a 64-bit computer.

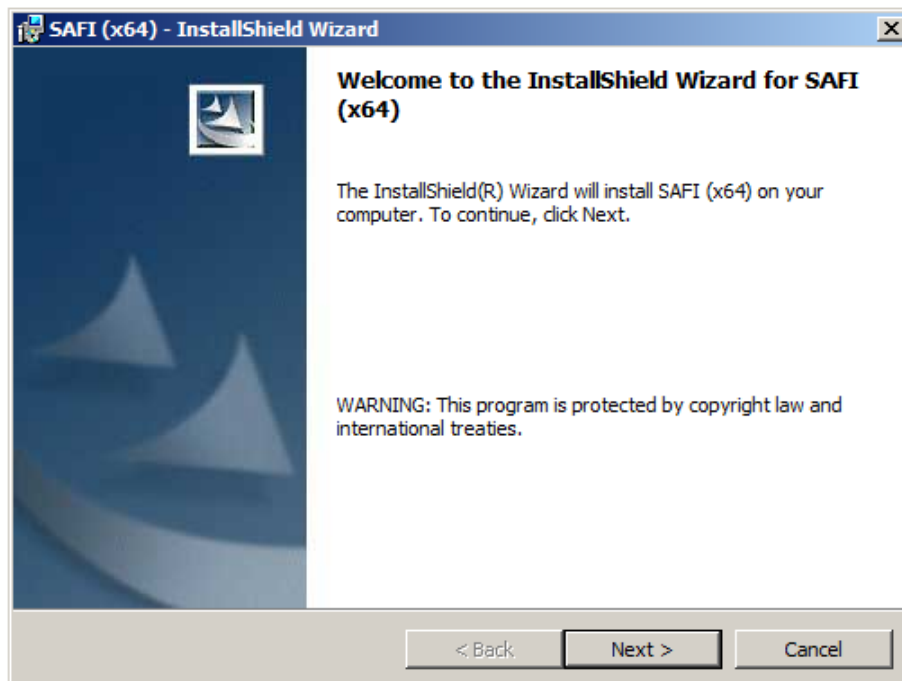
1. Once you know your computer's architecture you can install SAFI. Run the SAFI installer by running "Setup.exe"



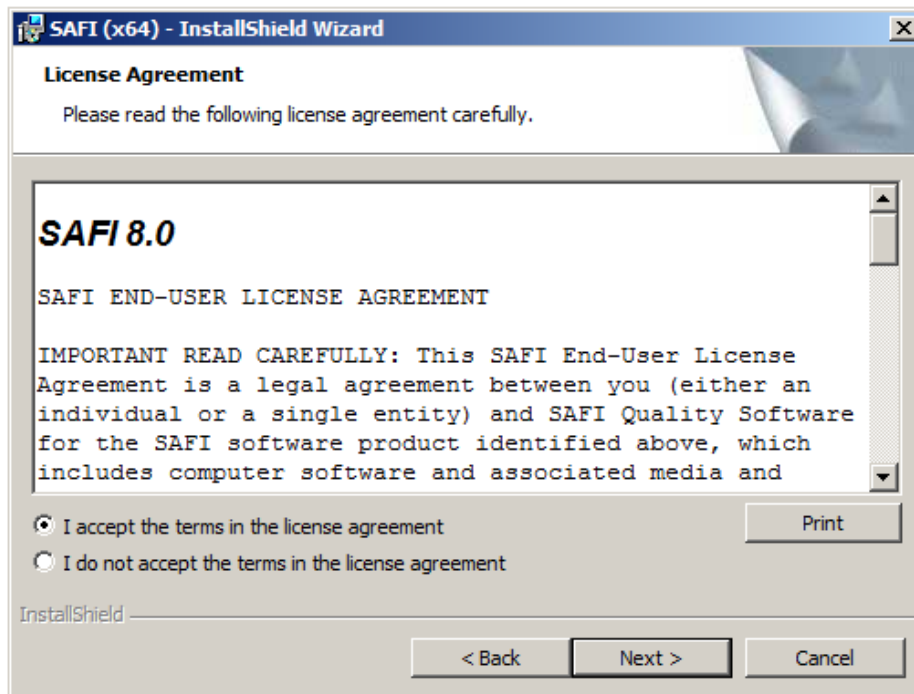
For a 32-bit Operating System, you will need to install the "(Win32)" version of the program.

For a 64-bit Operating System, you will need to install the "(x64)" version of the program.

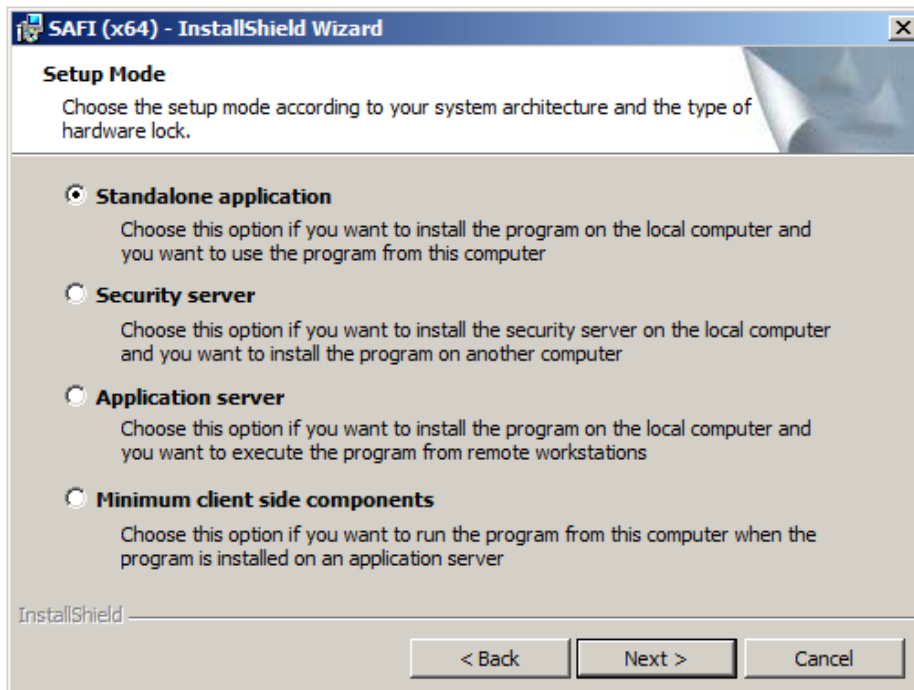
2. Click "Next"



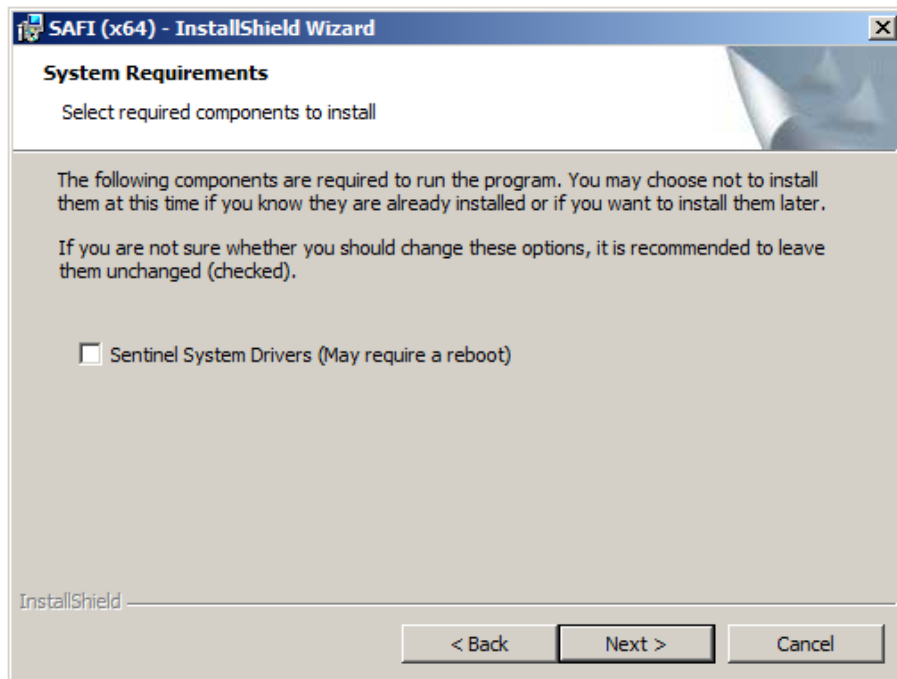
3. Accept the license agreement and click "Next"



4. Select "Standalone application" and click



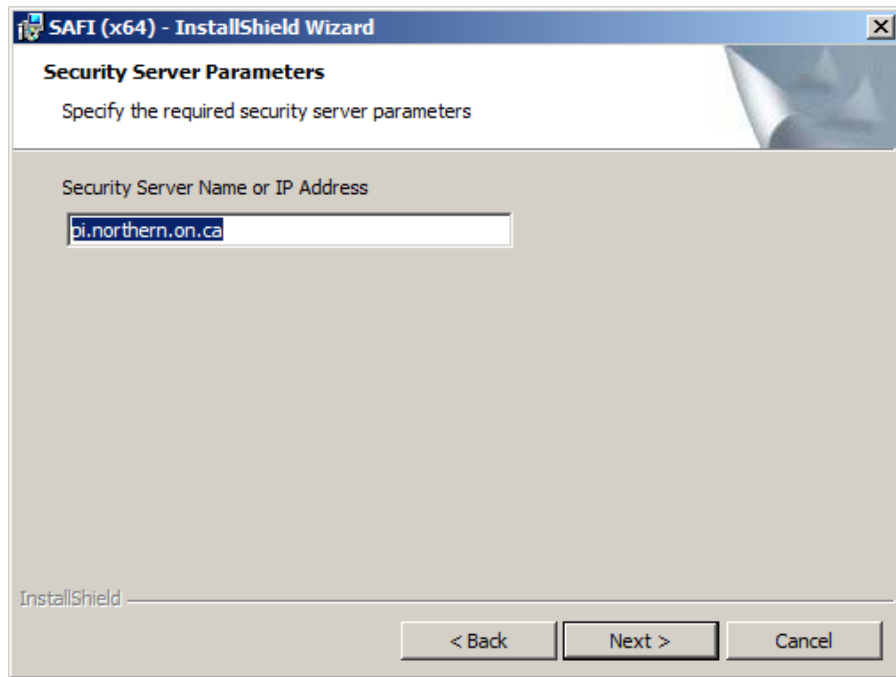
5. Make sure “Sentinel System Drivers” is **NOT** checked and click next.



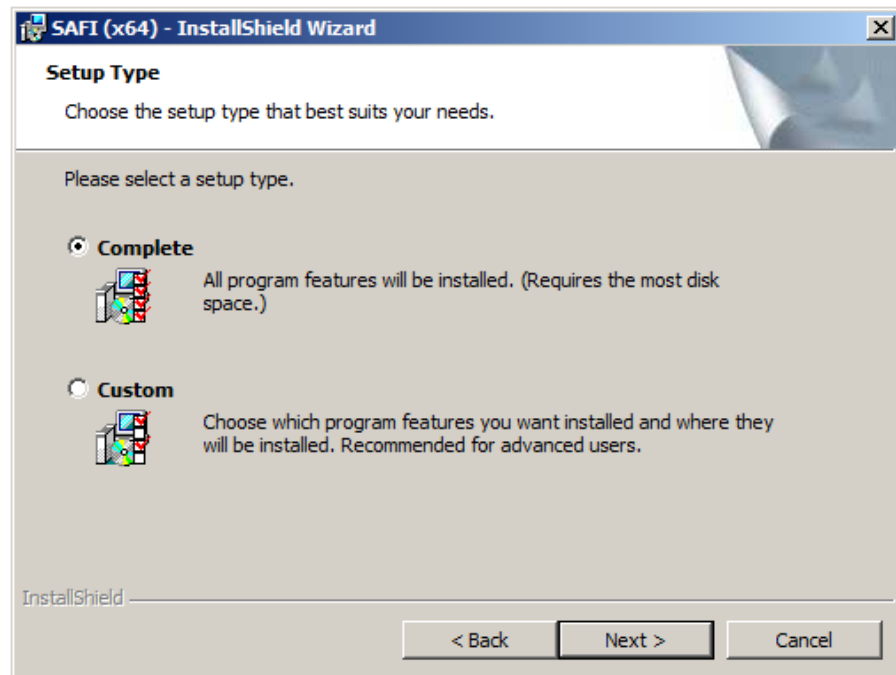
6. On the next screen click the “Network Security System” button and then click “Next”



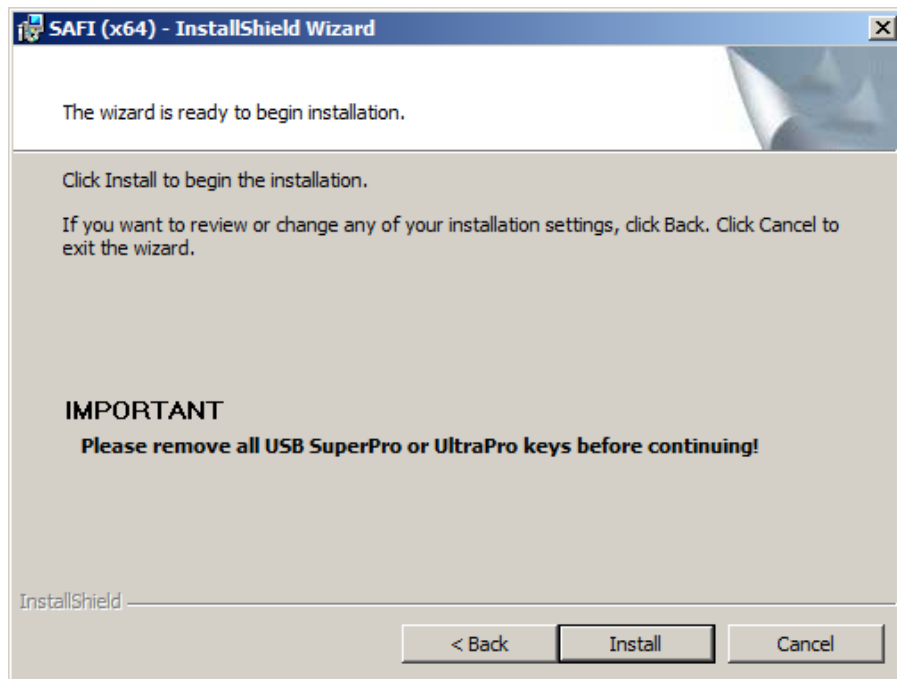
7. Type the server name into the box. The server is pi.northern.on.ca



8. Click "Next"



9. Click "Install"



10. You're Done!

